

*California Implant Institute Bone Grafting kit II*  
*Developed by Dr. Louie Al-Faraje*

**557L-11-010** Used to make the bony cuts in harvesting chin block graft

**H162-11-016** Lindeman for Straight implant handpiece (used to make the superior ramus cut & the anterior body cut for harvesting ramus block)

**167IK-21-023** *Internal Kooling* Lindeman for contra angle implant handpiece. Used to correct wrong angulation & position of the pilot drill, also it is the first drill to use in anterior immediate placement to avoid buccal plate perforation (see picture)

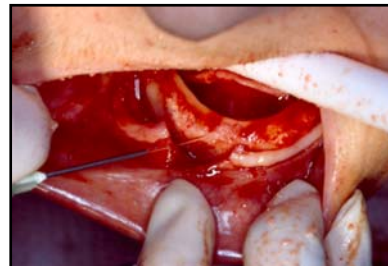
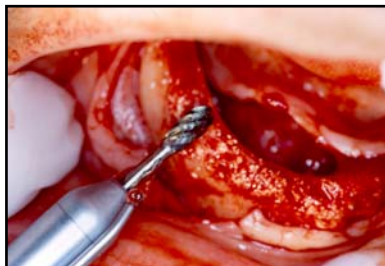


**801-11-23** Used to score the bone when making the inferior ramus cut for harvesting ramus block, also used in sinus lift procedure to score the bony window (see picture)



**H71-11-050** Used for alveoplasty (i.e, flattening the alveolar ridge to gain more crestal width), also for contouring the bone block

**H73E-11-040** Used for alveoplasty (i.e., flattening the alveolar ridge to gain more crestal width, see picture), also for bone removal when doing tuberosity reduction.



Each kit comes with a custom bur block.  
To order your kit, please call 858-496-0574 or fill and the fax the order form  
Refill thru *Brasseler USA* 800-841-4522