

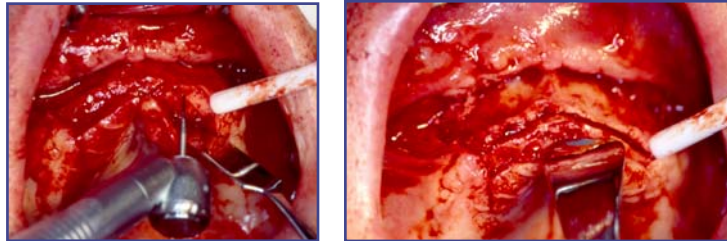
*California Implant Institute Bone Grafting kit I*  
*Developed by Dr. Louie Al-Faraje*

**557-36-10**

This bur is used for making all bony cuts (superior, inferior and 2 vertical) for harvesting chin bone block on contra angle surgical handpiece, also for wisdom teeth removal

**700XL-36-010**

Used to make the longitudinal cut in the maxillary alveolar ridge in the “alveolar ridge split” procedure (see picture)



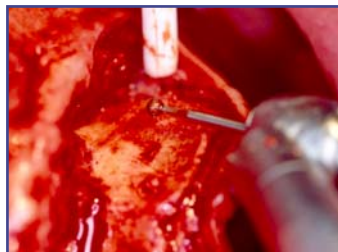
**801-36-14**

Used to create bleeding points in the socket after extraction when immediate implant placement is desired (the purpose is to create a stable blood clot). Also can be used to create bleeding points in the buccal bone or on the crest for GBR (see pictures)



**801-36-023**

Used in preparing the recipient site for block grafting, also in shaping the block before fixing it to the recipient site. Also for making the osseous score lines in the “alveolar ridge split” procedure (see picture). Also for alveoplasty in tight areas (like removing some bone above the implant platform level after placing the implant in the case of immediate placement). and also in *small* size tori removal



**801-36-35**

Used to scallop the alveolar ridge to achieve more esthetic results by forming bony papillae (see picture). Also for removal of medium to large tori.

